

CONTEMPO



SUSTAINABILITY

2018

CONTEMPO



SUSTAINABLE PACKAGING SOLUTIONS

CONTEMPO



# SUSTAINABLE PACKAGING SOLUTIONS



ORIGINAL

## MOD SOLUTIONS

### MATERIALS

**SUBSTRATE:**



.028" CCNB



Recycled content, recyclable

**LAMINATE:**



BRONZE EMBOSSED  
MILLED PAPER - MATCH SAMPLE



Added lamination process  
IMPROVE BY:  
Print direct to substrate

**FOIL FRONT:**



MATTE CREAM -  
MATCH SAMPLE

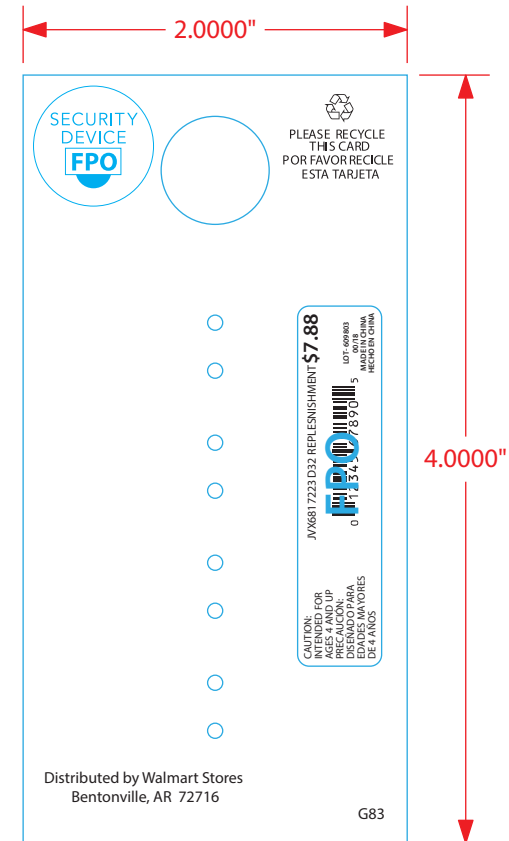
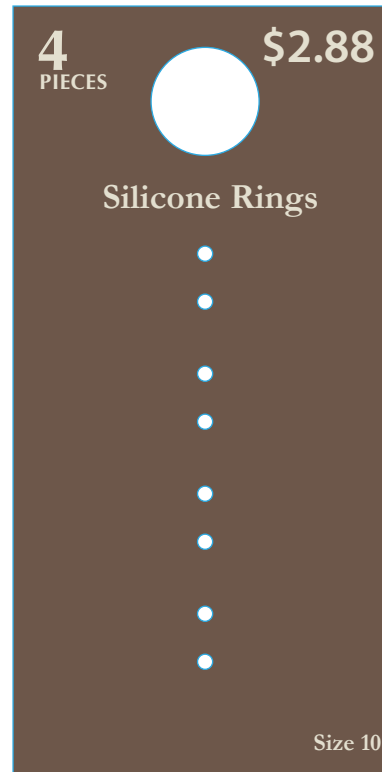


Waste produced by foil  
IMPROVE BY:  
Print direct to substrate

**INK BACK:**



BLACK



S.M.P-287291C

CONTEMPO



# SUSTAINABLE PACKAGING SOLUTIONS



NEW

## MOD SOLUTIONS

### MATERIALS

**SUBSTRATE:**



.028" CCNB- DIRECT EMBOSS LINEN TEXTURE

**INK FRONT:**



SOY BASED INK MATCH PMS 9143 :



SOY BASED INK \*\*MATCH SAMPLE\*\*

**INK BACK:**



SOY BASED INK: BLACK

**VARNISH FRONT:**



PEARL VARNISH

**POLYCAP**



2.50" MATTE POLYCAP

### PROS



Recycled content, recyclable



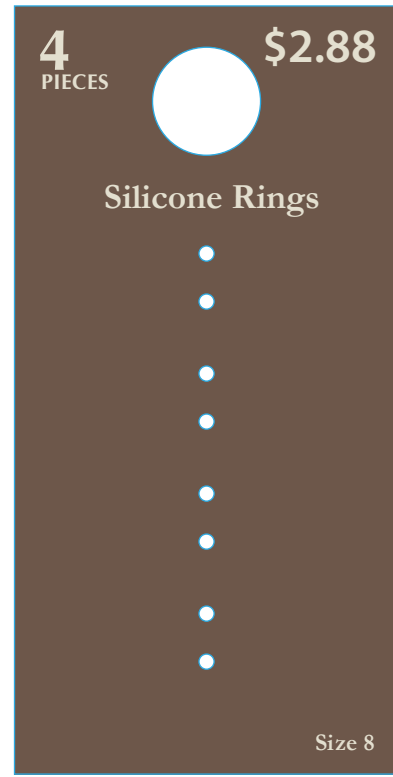
Removed laminate



Removed foil



Soybased ink



P.D.S-A13580C

CONTEMPO



# SUSTAINABLE PACKAGING SOLUTIONS



NEW

## MOD SOLUTIONS

### MATERIALS

**SUBSTRATE:**



.020" CCNB

**LAMINATE:**



FULL COVERAGE HEMP PAPER

**INK FRONT:**



SOY BASED INK MATCH PMS 9143



SOY BASED INK \*\*MATCH SAMPLE\*\*

**INK BACK:**



SOY BASED INK: BLACK

**VARNISH FRONT & BACK:**



NON SCRATCH MATTE

### PROS



Recycled content, recyclable



Hemp paper laminate



Removed foil



Soybased ink



Removed pearl varnish

4  
PIECES

\$2.88



Silicone Rings



Size 8

P.D.S-C13580C

CONTEMPO



# SUSTAINABLE PACKAGING SOLUTIONS



## ORIGINAL

### NO BOUNDARIES

### MATERIALS

**SUBSTRATE:**



FSC certified board, recyclable

**FOIL:**



PINK

Waste produced by foil  
IMPROVE BY:  
Print direct to substrate

**INK:**



BLACK

IMPROVE BY:  
Minimizing ink usage, i.e. remove black background from back of card

**OTHER:**



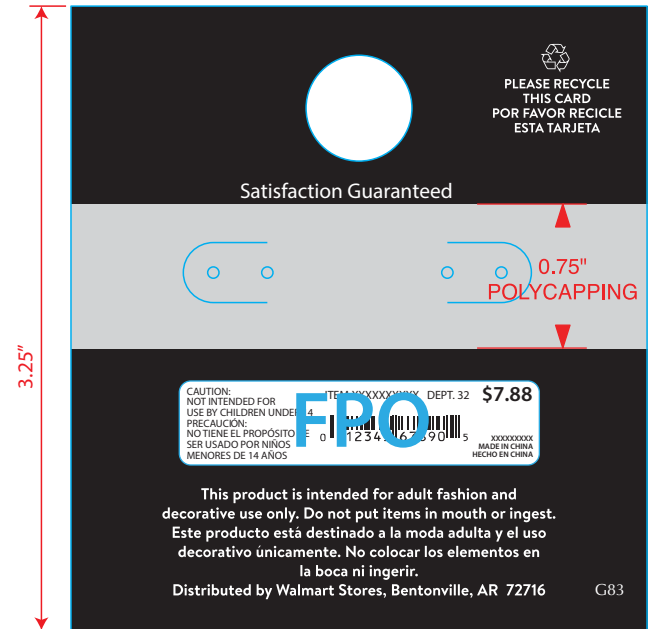
0.75" x 2.875"  
POLYCAP ON BACK



Added plastic material becomes waste  
IMPROVE BY:  
Removing, use post holes that sit at the bottom of the card, product will hang off



S.E.P-287141C



3.000"

CONTEMPO



# SUSTAINABLE PACKAGING SOLUTIONS



NEW

NO BOUNDARIES

## MATERIALS

### SUBSTRATE:



600GSM WHITE UNCOATED BOARD  
(APPROX .028" WHITE BOARD)

### INK FRONT:



PMS 220 (SOY BASED IF POSSIBLE)

### INK FRONT & BACK:



SOY BASED INK: BLACK

### OTHER:



0.75" x 2.875" POLYCAP ON BACK

### COATING FRONT & BACK:



MATTE VARNISH

## PROS



Recycled content, recyclable



Removed foil



Soybased ink



P.D.S-B13580C

CONTEMPO



# SUSTAINABLE PACKAGING SOLUTIONS



NEW

NO BOUNDARIES

## MATERIALS

### SUBSTRATE:



0.028" CCNB

### FOIL:



PINK FOIL (JINTAIHONG K-378)

### INK FRONT & BACK:



BLACK

### OTHER:



0.75" x 2.875" POLYCAP ON BACK

### COATING FRONT & BACK:



MATTE VARNISH

## PROS



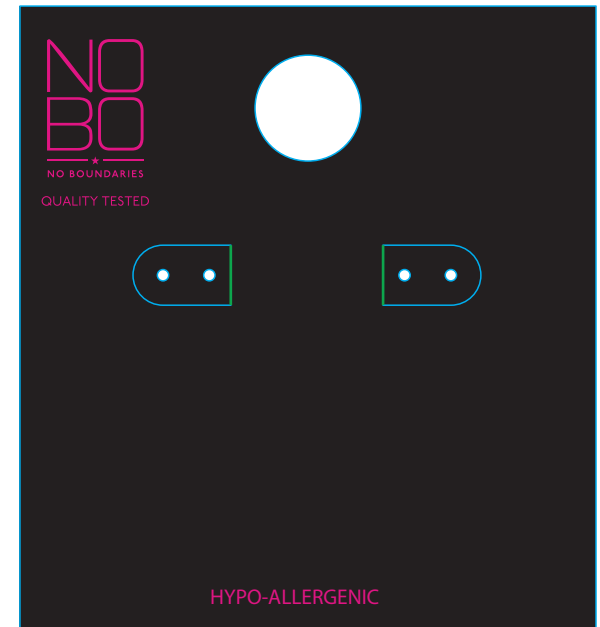
Recycled content, recyclable



Removed foil



Soybased ink



PDS-D13580C



CONTEMPO



# SUSTAINABLE PACKAGING SOLUTIONS



## ORIGINAL

## NO BOUNDARIES

### MATERIALS

**SUBSTRATE:**



FSC certified board, recyclable

**FOIL:**



PINK

Waste produced by foil  
**IMPROVE BY:**  
Print direct to substrate

**INK:**



BLACK

**IMPROVE BY:**  
Minimizing ink usage, i.e. remove black background from back of card

**COATING:**



MATTE VARNISH

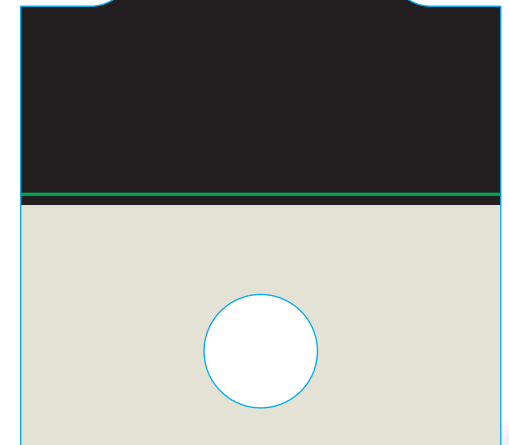
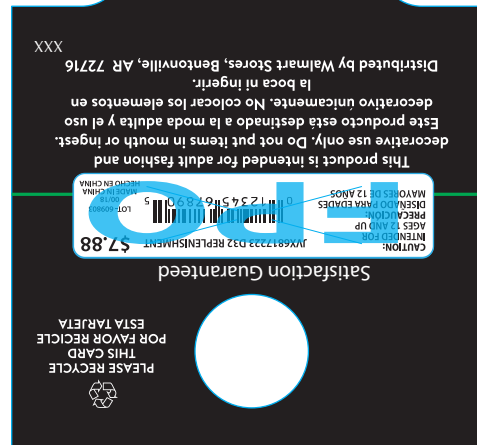
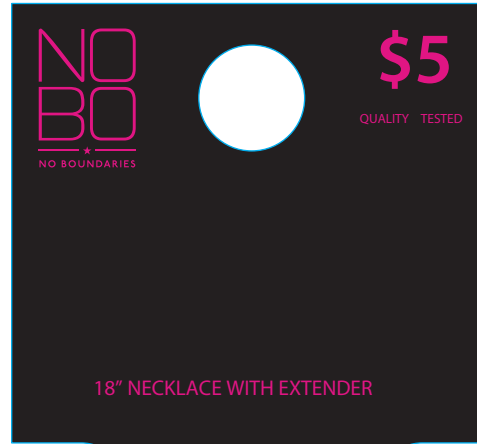
**OTHER:**



1.25" WINGTAL-DS11



Added plastic material becomes waste  
**IMPROVE BY:**  
Keep to a minimum or use a flat card



**S.F.P-287390C**

CONTEMPO



# SUSTAINABLE PACKAGING SOLUTIONS



NEW

NO BOUNDARIES

## MATERIALS

### SUBSTRATE:



0.016" CCNB

### FOIL:



PINK FOIL (JINTAIHONG K-378)

### INK FRONT & BACK:



BLACK

### OTHER:



1.25" WINGTAI-DS11

### COATING FRONT & BACK:



MATTE VARNISH

## PROS



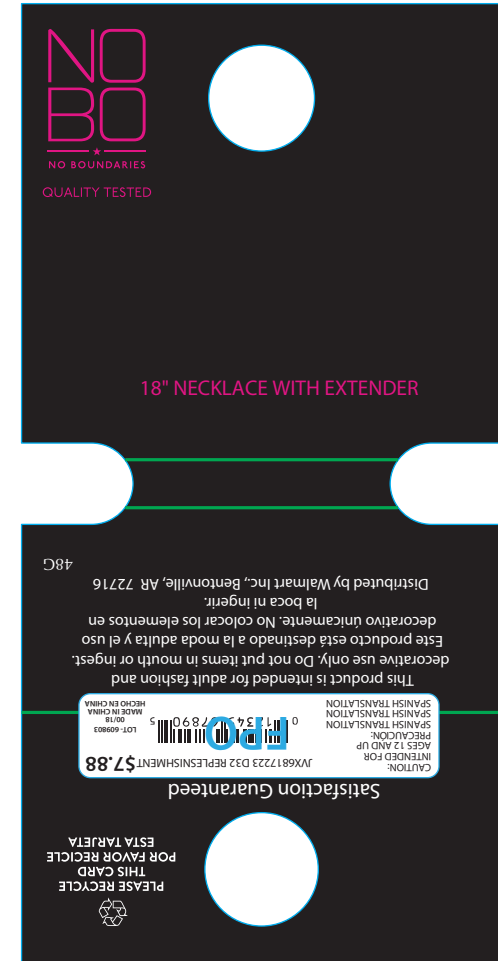
Recycled content, recyclable



Removed foil



Soybased ink



18" NECKLACE WITH EXTENDER

PLEASE RECYCLE THIS CARD FOR FAVOR RECYCLE ESTA TARJETA  
Satisfaction Guaranteed  
CAUTION: INTENDED FOR ACCESS 12 AND UP  
PRECAUCION: INTENDIDO PARA ACCES 12 ADO UP  
SPANISH TRANSLATION 0 1154 890 5  
LOT: 609083  
MADE IN CHINA  
HICHO EN CHINA  
This product is intended for adult fashion and decorative use only. Do not put items in mouth or ingest. Este producto está destinado a la moda adulta y el uso decorativo únicamente. No colocar los elementos en la boca ni ingerir.  
Distributed by Walmart Inc., Bentonville, AR, 72716  
48C

PDS-E13580C

CONTEMPO



# SUSTAINABLE PACKAGING SOLUTIONS

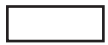


## ORIGINAL

# wonder nation.

### MATERIALS

**SUBSTRATE:**



.025" C1S WHITE BOARD



FSC certified board, recyclable

**INK FRONT:**



PMS ORANGE 021



PMS COOL GRAY 9C 10% AND 100%

**INK BACK:**



BLACK

**COATING:**



NON-SCRATCH MATTE



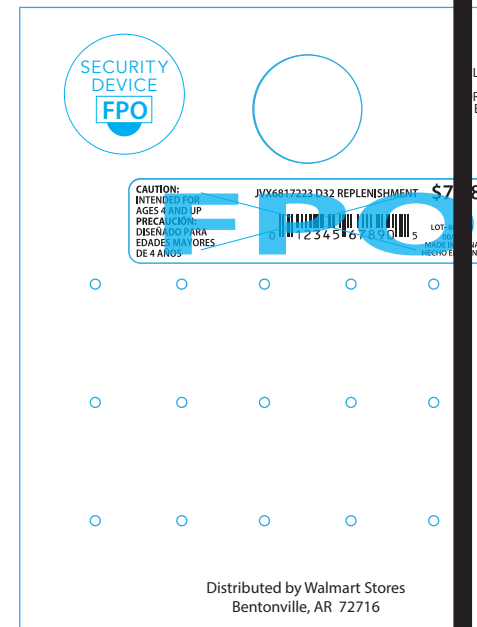
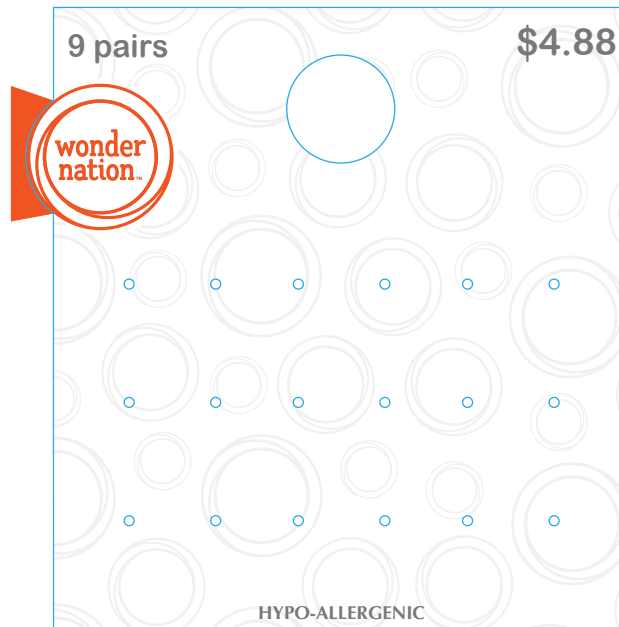
SPOT UV



SPOT VARNISH PER SAMPLE



Added processes  
IMPROVE BY:  
Keep to a minimum



### S.M.P-287024C

CONTEMPO



# SUSTAINABLE PACKAGING SOLUTIONS



NEW

wonder nation..

## MATERIALS

### SUBSTRATE:

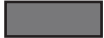


.025" CCNB

### INK FRONT:



PMS ORANGE 021



PMS COOL GRAY 9C 10% AND 100%

### INK BACK:



BLACK

### COATING:



NON-SCRATCH MATTE



SPOT UV



SPOT VARNISH PER SAMPLE

## PROS



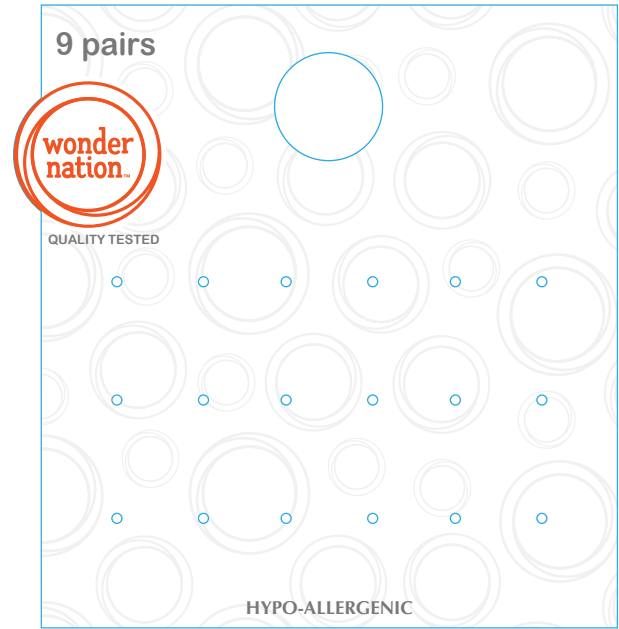
Recycled content, recyclable



Soybased ink



Unbleached board



P.D.S-F13580C

CONTEMPO



MATERIAL SUSTAINABILITY



# MATERIAL SUSTAINABILITY

## CCNB

Clay Coated Newsback

Recycled paperboard  
Clay coated on one side

Up to 92% Recycled Content

Standard for box board

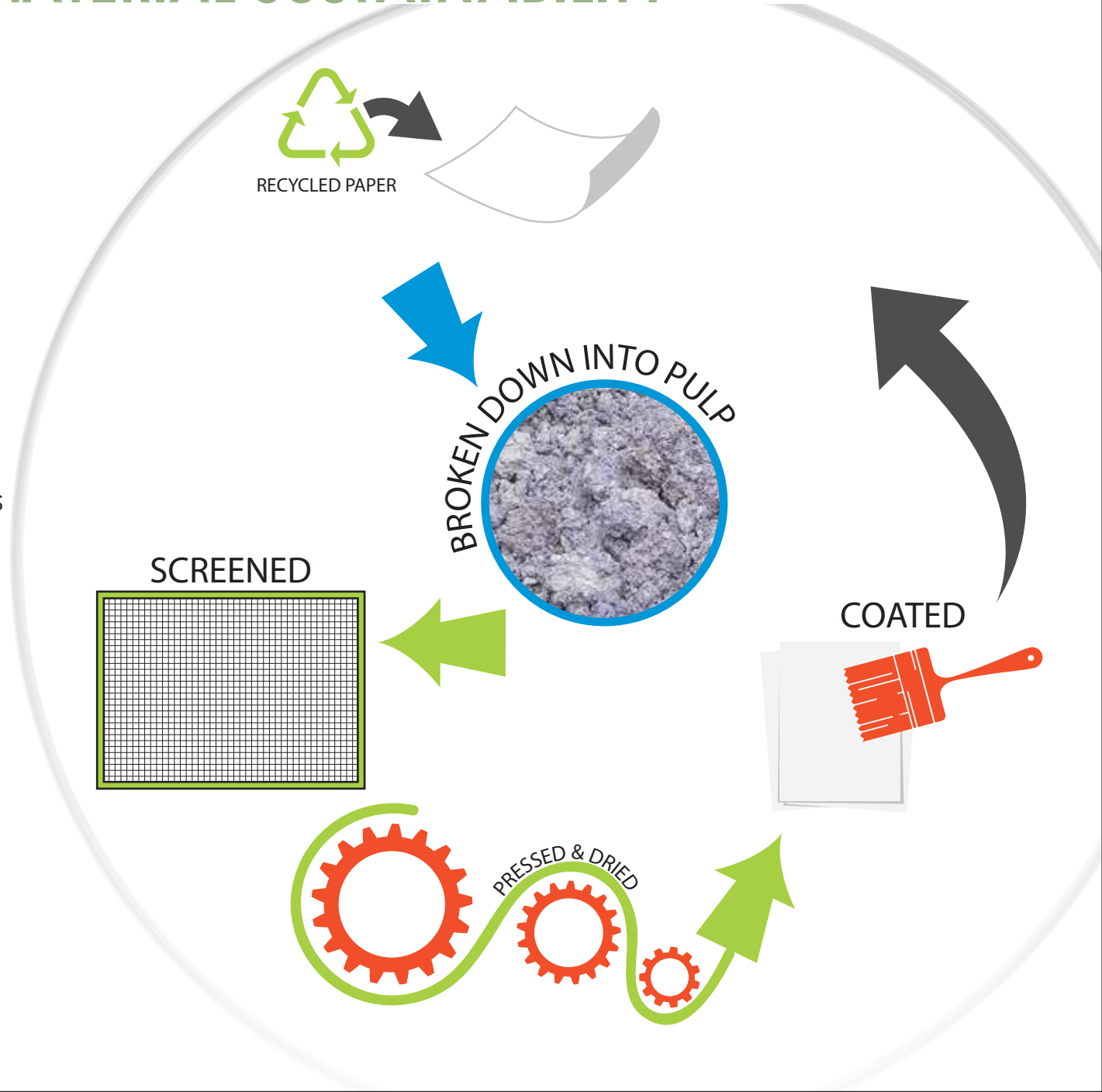
Available in various thicknesses

### PROS

Recycled content  
Recyclable  
Compostable

### CONS

Energy consumption  
Deforestation  
Water usage





# MATERIAL SUSTAINABILITY

## C1S

Coated One Side

Bleached paperboard  
Coated on one side

70-80% Recycled Content

Standard for flat  
cards and foldovers

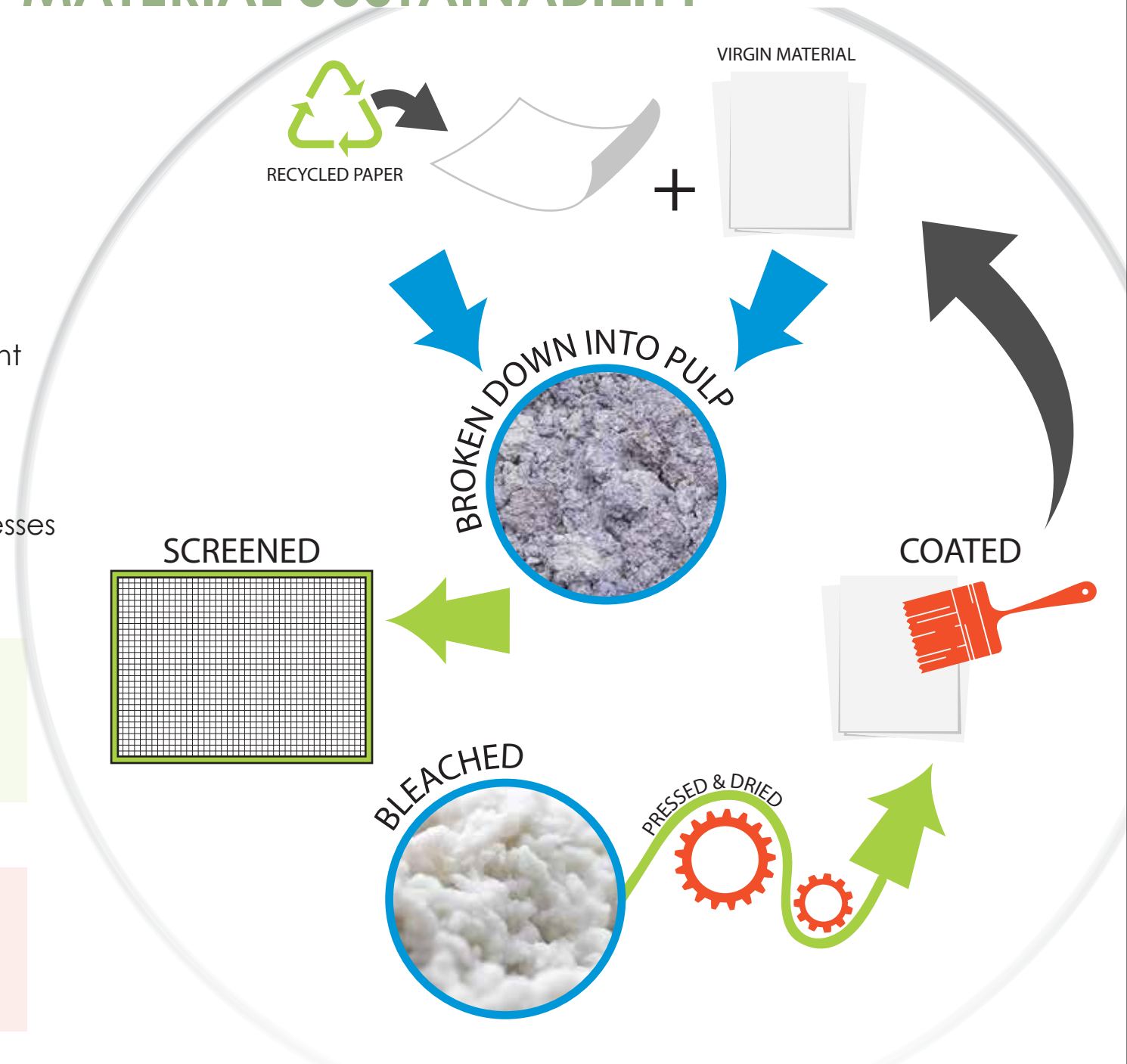
Available in various thicknesses

### PROS

Recycled content  
Recyclable  
Compostable

### CONS

Energy consumption  
Deforestation  
Water usage  
Bleach





# MATERIAL SUSTAINABILITY

## HEMP PAPER

Hemp + Wood

20% Hemp fiber

Available in various thicknesses

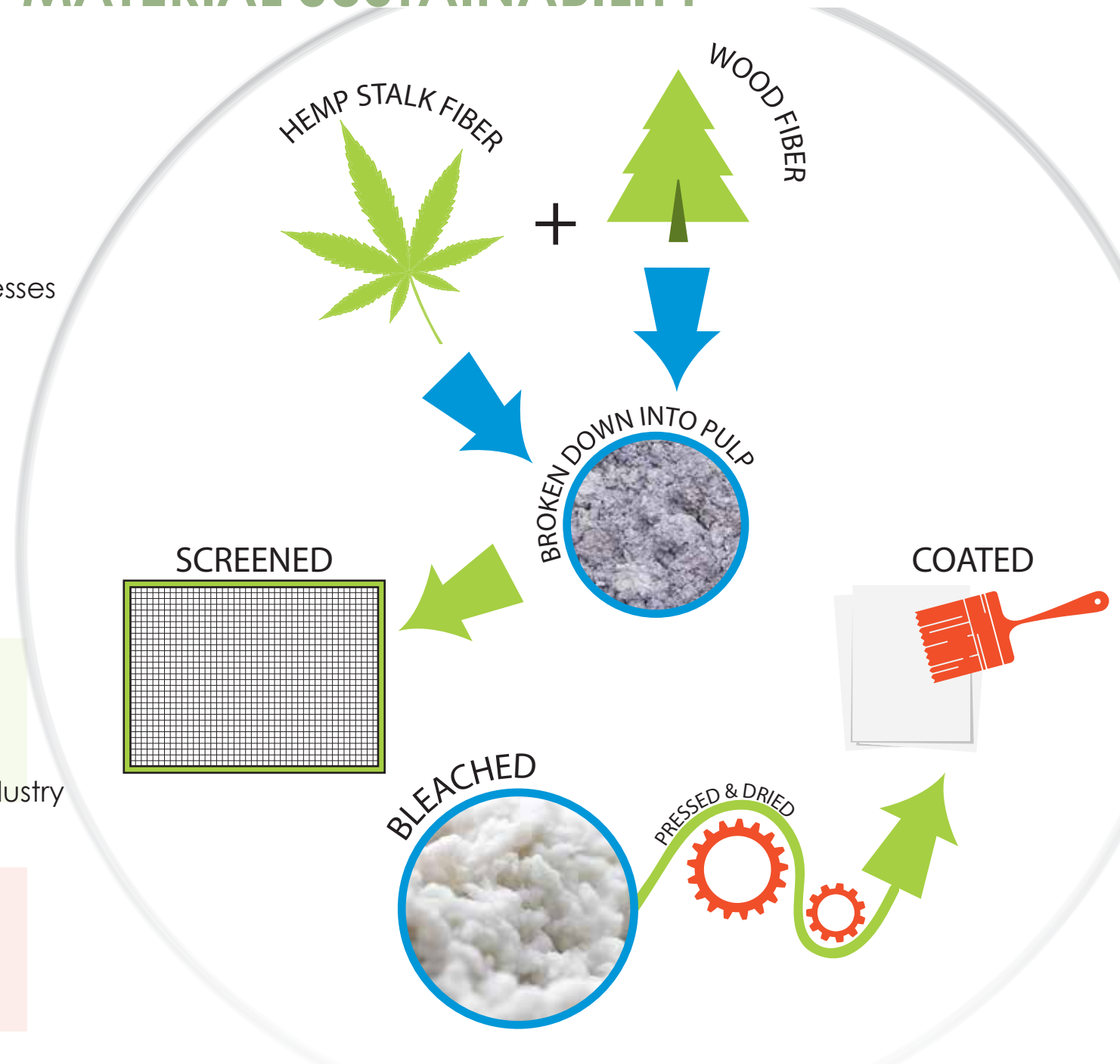
### PROS

- Recycled content
- Recyclable
- Compostable
- Fewer trees used

Waste product of hemp industry

### CONS

- Energy consumption
- Deforestation
- Water usage







# SUSTAINABLE BUSINESS PRACTICES

## STONE PAPER

Calcium Carbonate + HDPE

Smooth printable surface

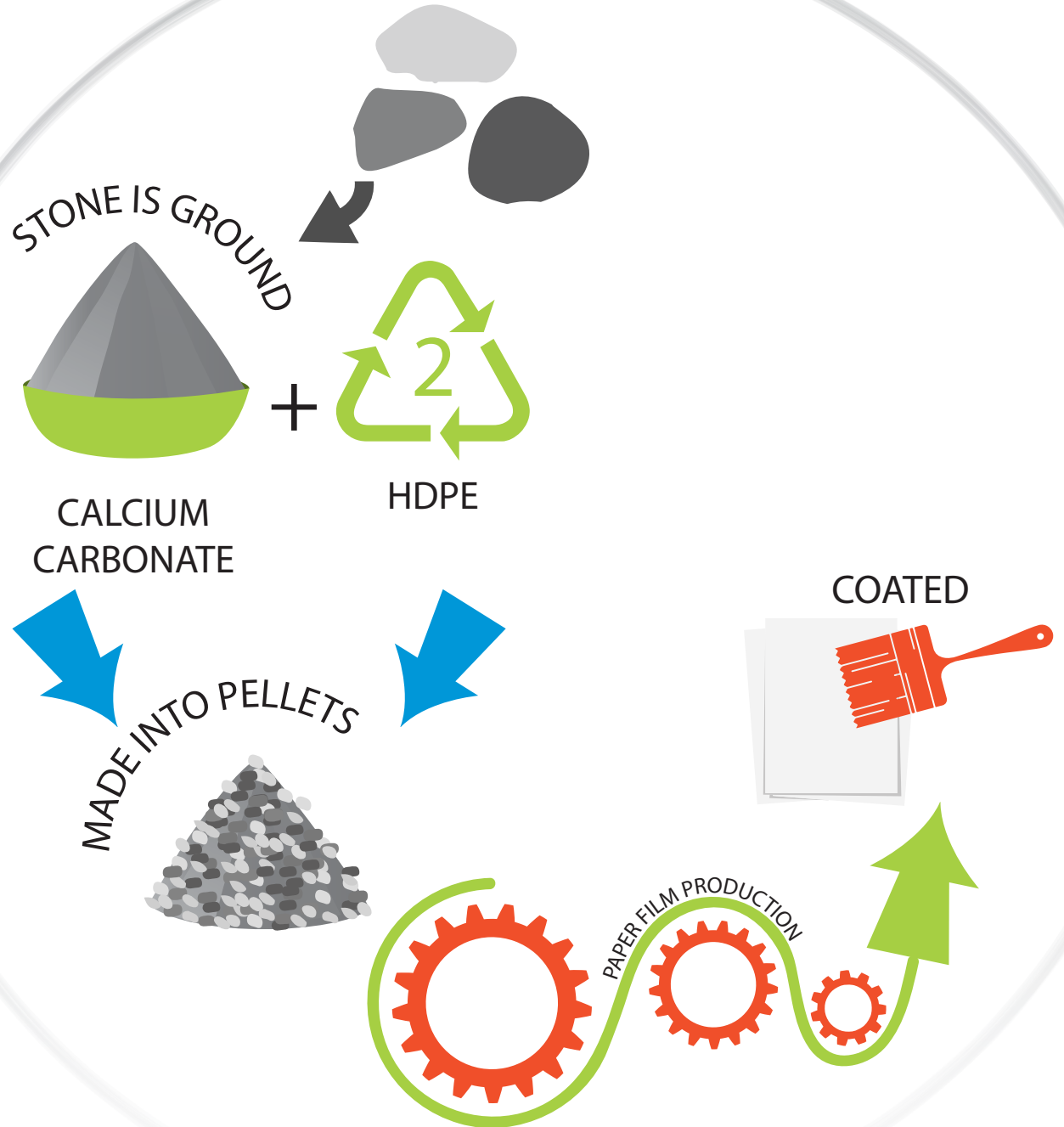
Available in various thicknesses

### PROS

Recycled content  
Tree free

### CONS

Synthetic  
Not recyclable



CONTEMPO



# MATERIAL SUSTAINABILITY

## BIODEGRADABLE PET

Oxo-Biodegradable Polyethylene

Polyethylene with 1% D2W additive

Begins to degrade within 6-48 mos. from high temperature and UV light

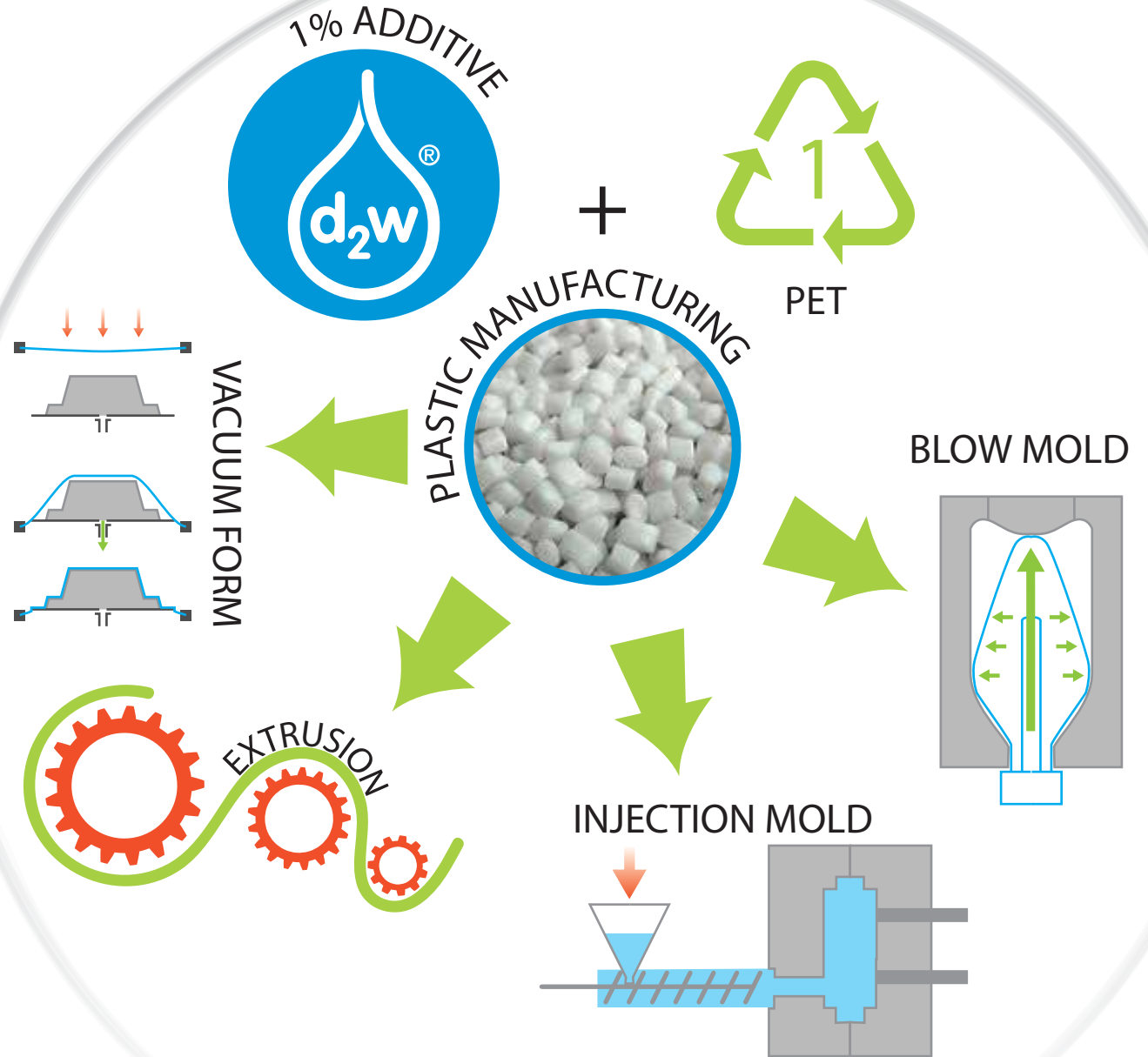
Available in various thicknesses

### PROS

Degrades into Water, Carbon Dioxide, and Biomass

### CONS

Still uses the basic manufacturing processes of producing plastics





# MATERIAL SUSTAINABILITY

## BIODEGRADABLE PET

PP & PE BOTTLE



HDPE BOTTLE



3 YEAR OLD BOTTLE BEGINNING TO DEGRADE





# MATERIAL SUSTAINABILITY

## PHOTOLYSIS PE

Photo-degradable Polyethylene

Polyethylene film that degrades in sunlight

Barcode can scan through the film

### PROS

Degrades into Water, Carbon Dioxide, and Biomass

### CONS

Still uses the basic manufacturing processes of producing plastics





# MATERIAL SUSTAINABILITY

## PHOTOLYSIS PE



Press & Seal

Open at the Top

**Option 2**  
6.000" X 7.500"

**Option 1**  
6.000" X 6.875"



# MATERIAL SUSTAINABILITY

## PBAT

Polybutylene Adipate Terephthalate

A biodegradable copolymer

Compostable plastic film

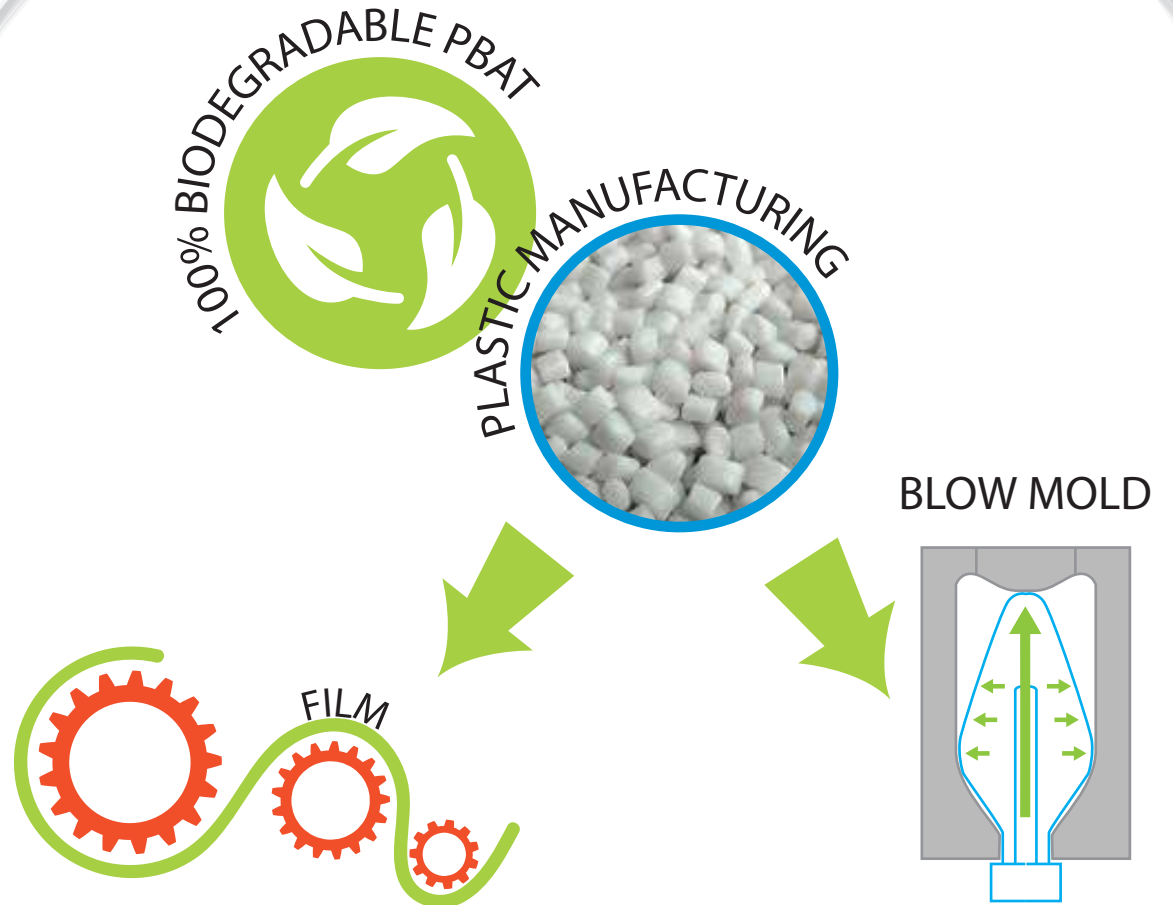
Can be transparent  
but not crystal clear

### PROS

Compostable

### CONS

Still uses the basic  
manufacturing processes  
of producing plastics



CONTEMPO



# MATERIAL SUSTAINABILITY

PBAT







# MATERIAL SUSTAINABILITY

## PLA

Polylactic Acid

A biodegradable "bioplastic" made from renewable resources

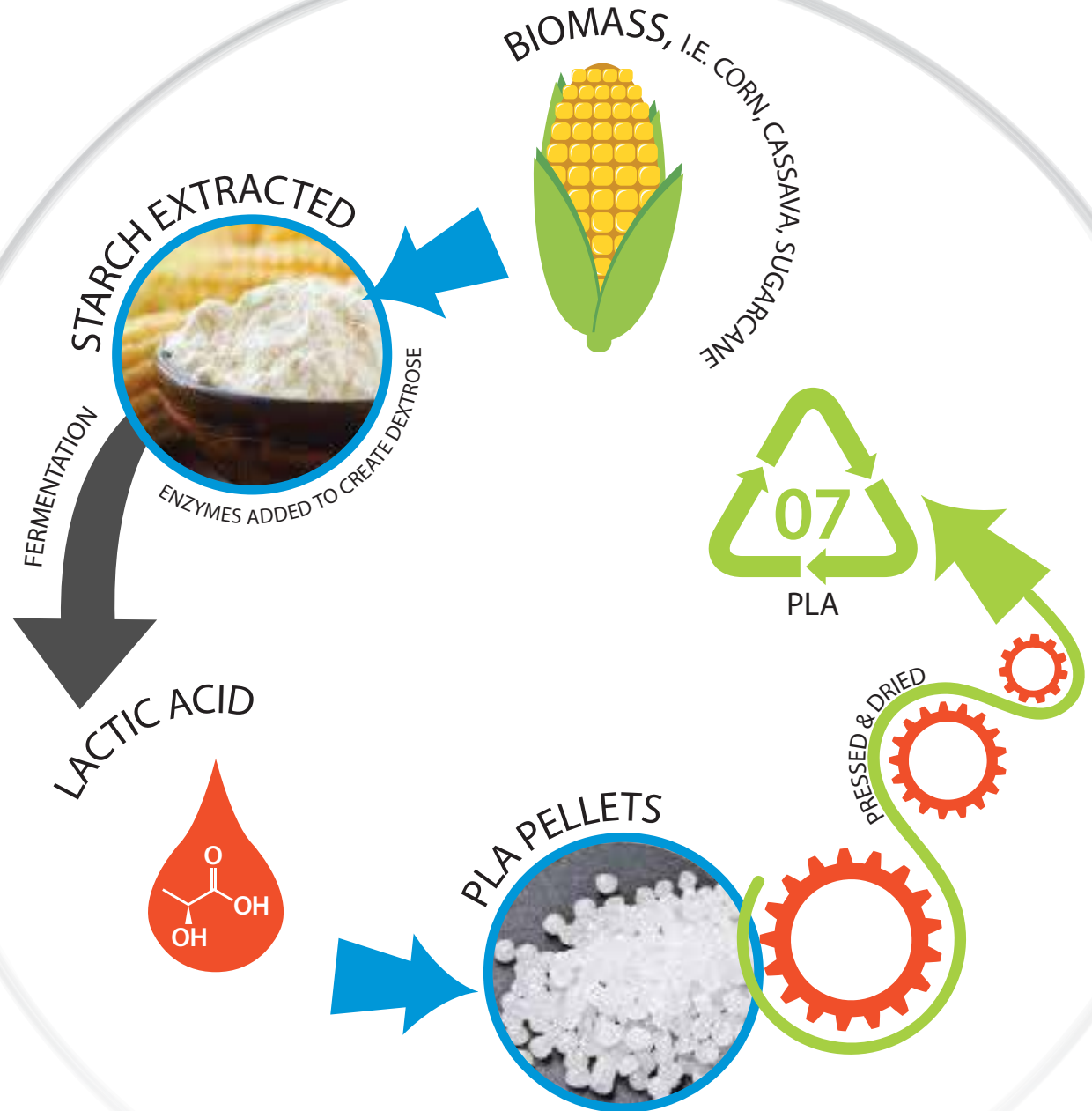
Degrades in 6-24 mos compared to conventional plastics which can take 100s-1,000s of yrs

### PROS

- Made from renewable resources
- Degrades in a short amount of time
- Relies less on fossil fuels
- Fewer greenhouse gas emissions when degrading

### CONS

- Not commonly recycled
- Can be toxic during manufacturing
- Can contaminate recycling of other plastics if not clearly marked





CONTEMPO



# MATERIAL SUSTAINABILITY

PLA





# MATERIAL SUSTAINABILITY

## MOLDED PULP

or Molded Fiber

Create stock or custom forms

Can be colored

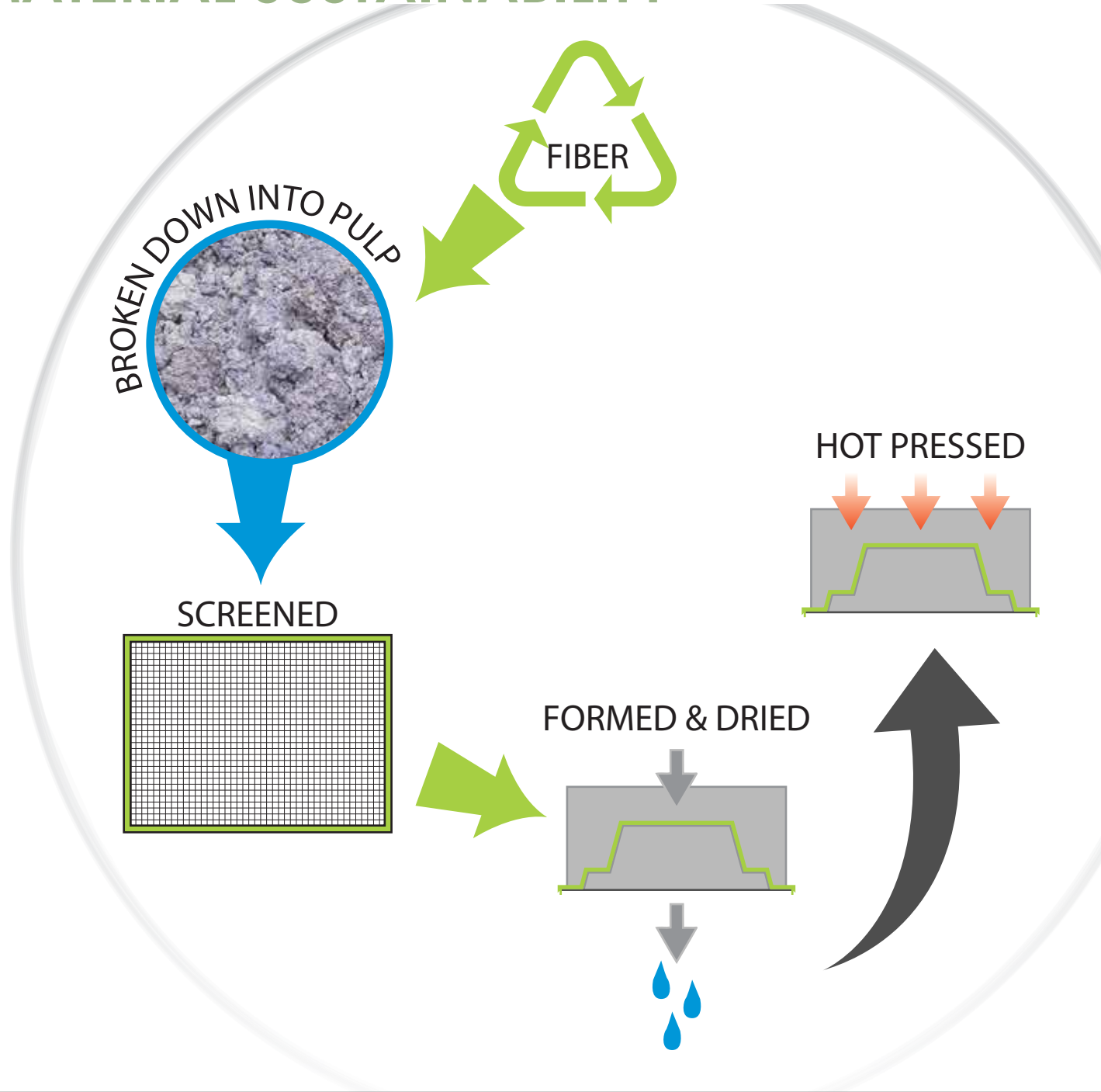
100% recycled fibers

### PROS

- 100% Recycled
- Recyclable
- Compostable

### CONS

- Energy consumption
- Water usage
- Mold fees

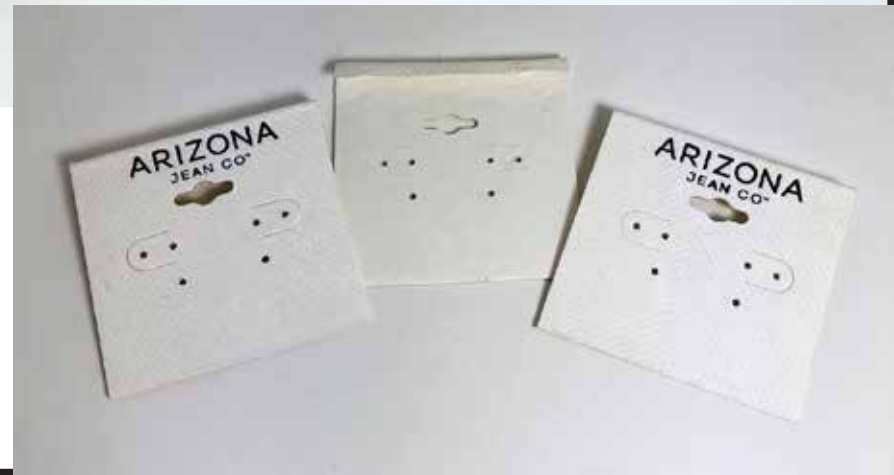


CONTEMPO



# MATERIAL SUSTAINABILITY

## MOLDED PULP



CONTEMPO



PACKAGING SUSTAINABILITY



## FOLDOVERS

### SELF-LOCKING (NO ADHESIVE)

#### OPTION 1

##### SUBSTRATE:



350GSM WHITE UNCOATED BOARD  
(APPROX .016" WHITE BOARD)

##### FOIL:



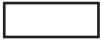
PINK FOIL (JINTAIHONG K-378)

##### INK FRONT & BACK:

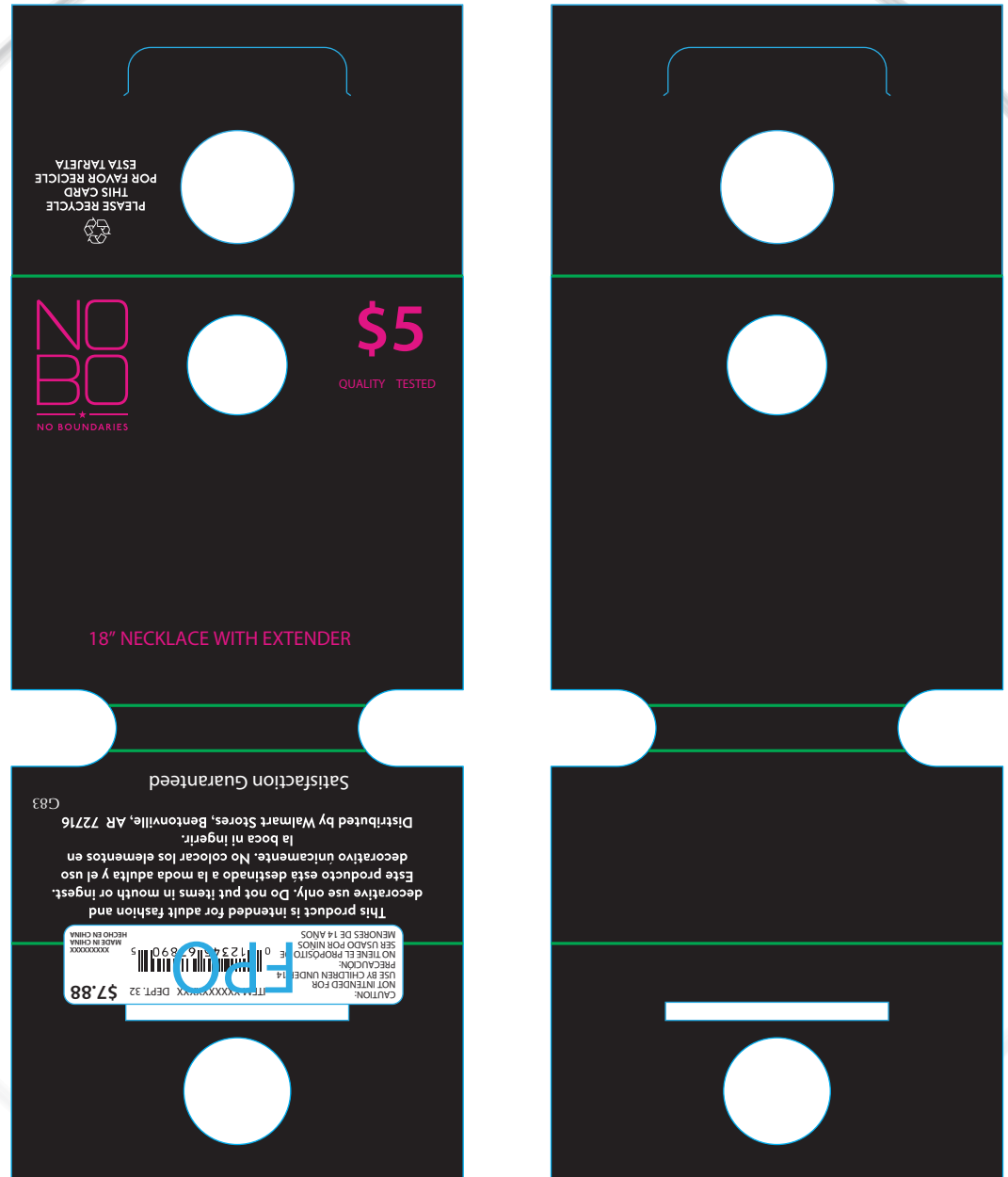


BLACK

##### COATING FRONT & BACK:



MATTE VARNISH





## FOLDOVERS

### SELF-LOCKING (NO ADHESIVE)

#### OPTION 2

**SUBSTRATE:**



350GSM WHITE UNCOATED BOARD  
(APPROX .016" WHITE BOARD)

**FOIL:**



PINK FOIL (JINTAIHONG K-378)

**INK FRONT & BACK:**

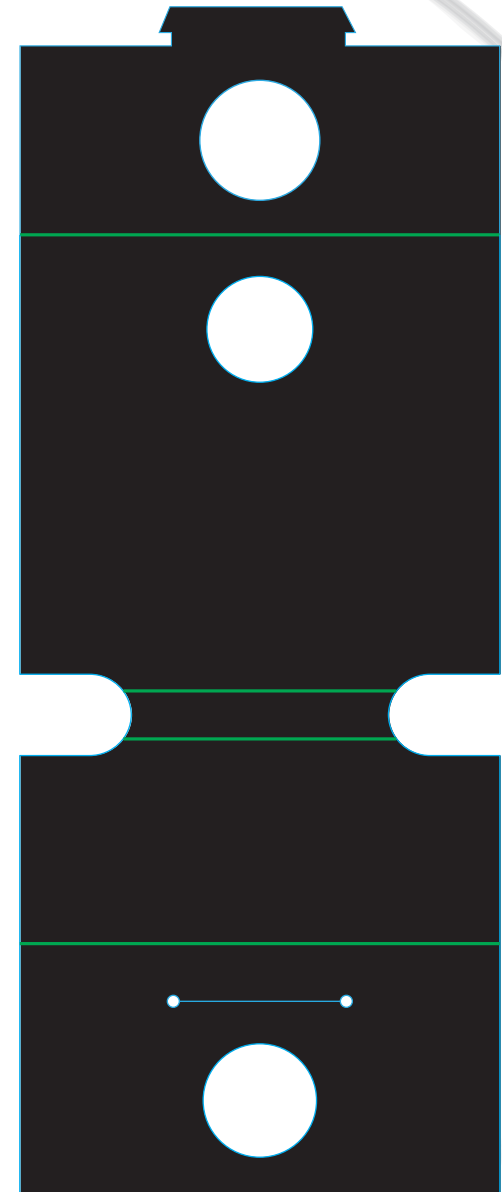
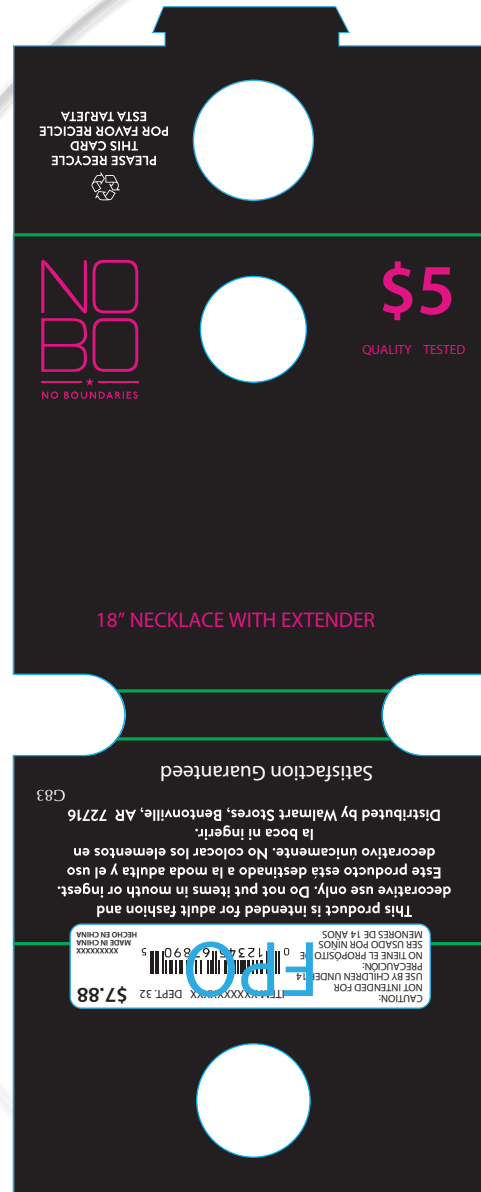


BLACK

**COATING FRONT & BACK:**



MATTE VARNISH





## FOLDOVERS

### SELF-LOCKING (NO ADHESIVE)

#### OPTION 3

**SUBSTRATE:**



350GSM WHITE UNCOATED BOARD  
(APPROX .016" WHITE BOARD)

**FOIL:**



PINK FOIL (JINTAIHONG K-378)

**INK FRONT & BACK:**

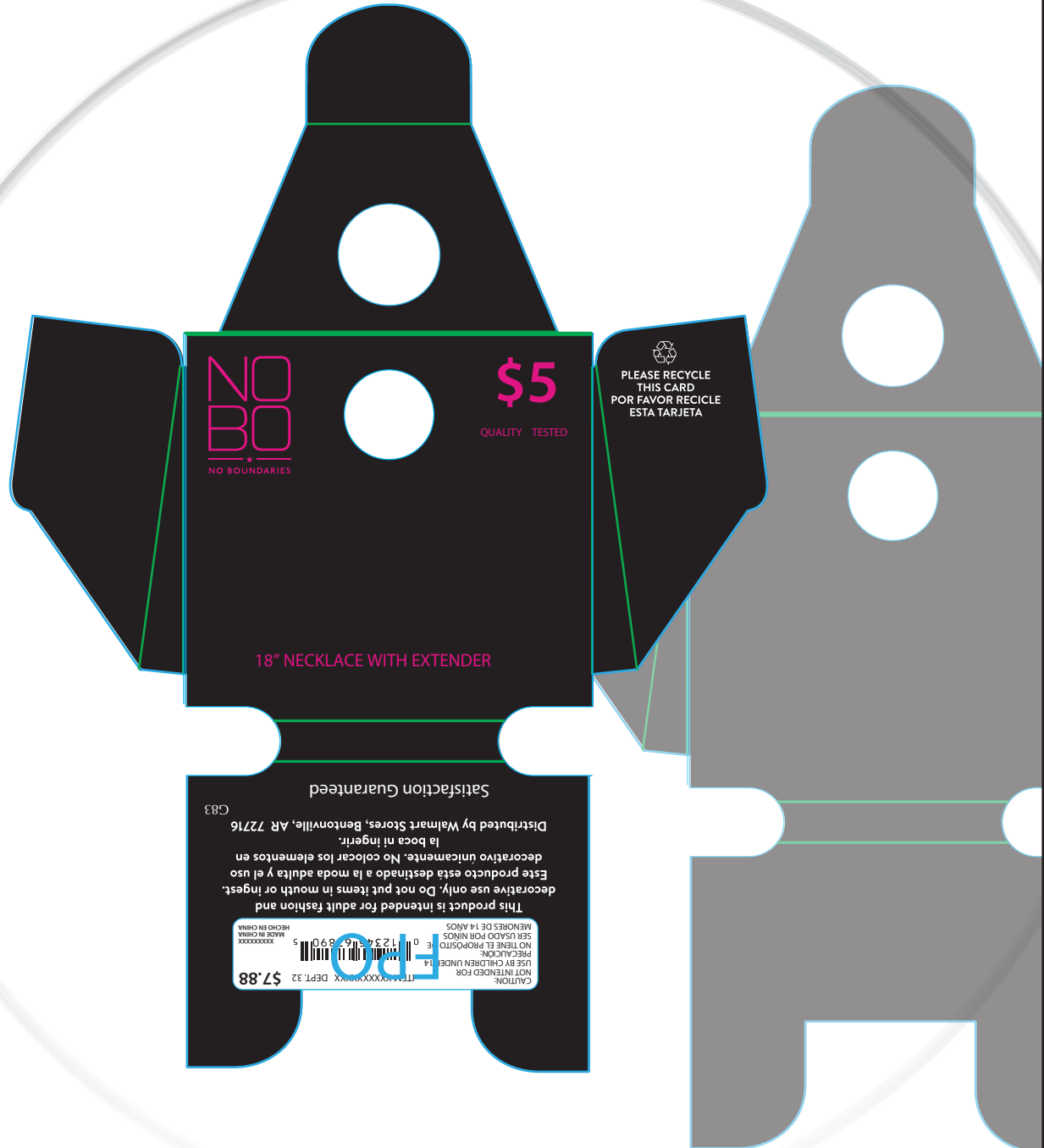


BLACK

**COATING FRONT & BACK:**



MATTE VARNISH





## FOLDOVERS

### SELF-LOCKING (NO ADHESIVE)

#### OPTION 1

##### SUBSTRATE:



350GSM WHITE UNCOATED BOARD  
(APPROX .016" WHITE BOARD)

##### FOIL:



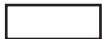
PINK FOIL (JINTAIHONG K-378)

##### INK FRONT & BACK:

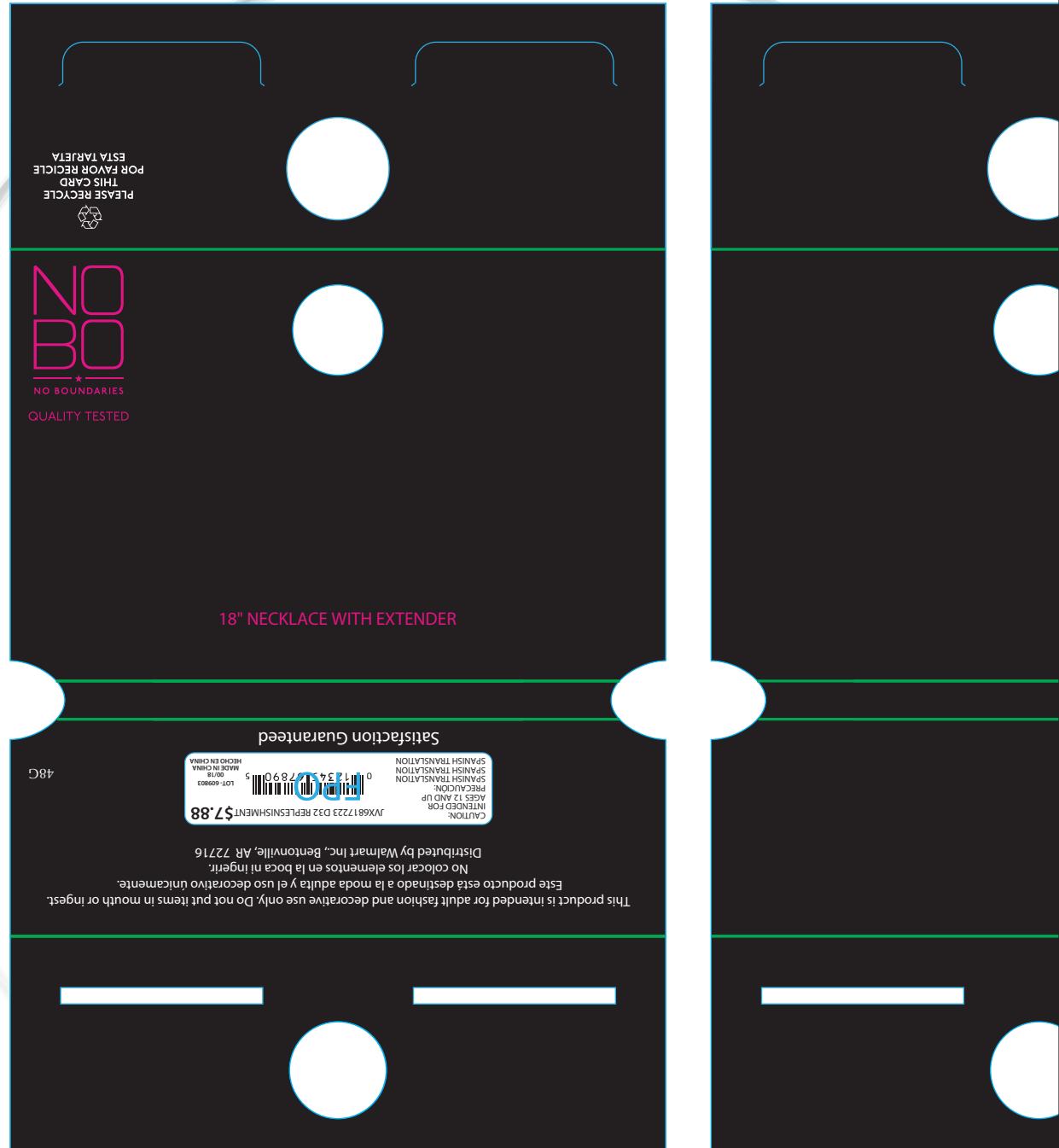


BLACK

##### COATING FRONT & BACK:



MATTE VARNISH







## FOLDOVERS

### SELF-LOCKING (NO ADHESIVE)

#### OPTION 2

##### SUBSTRATE:



350GSM WHITE UNCOATED BOARD  
(APPROX .016" WHITE BOARD)

##### FOIL:



PINK FOIL (JINTAIHONG K-378)

##### INK FRONT & BACK:

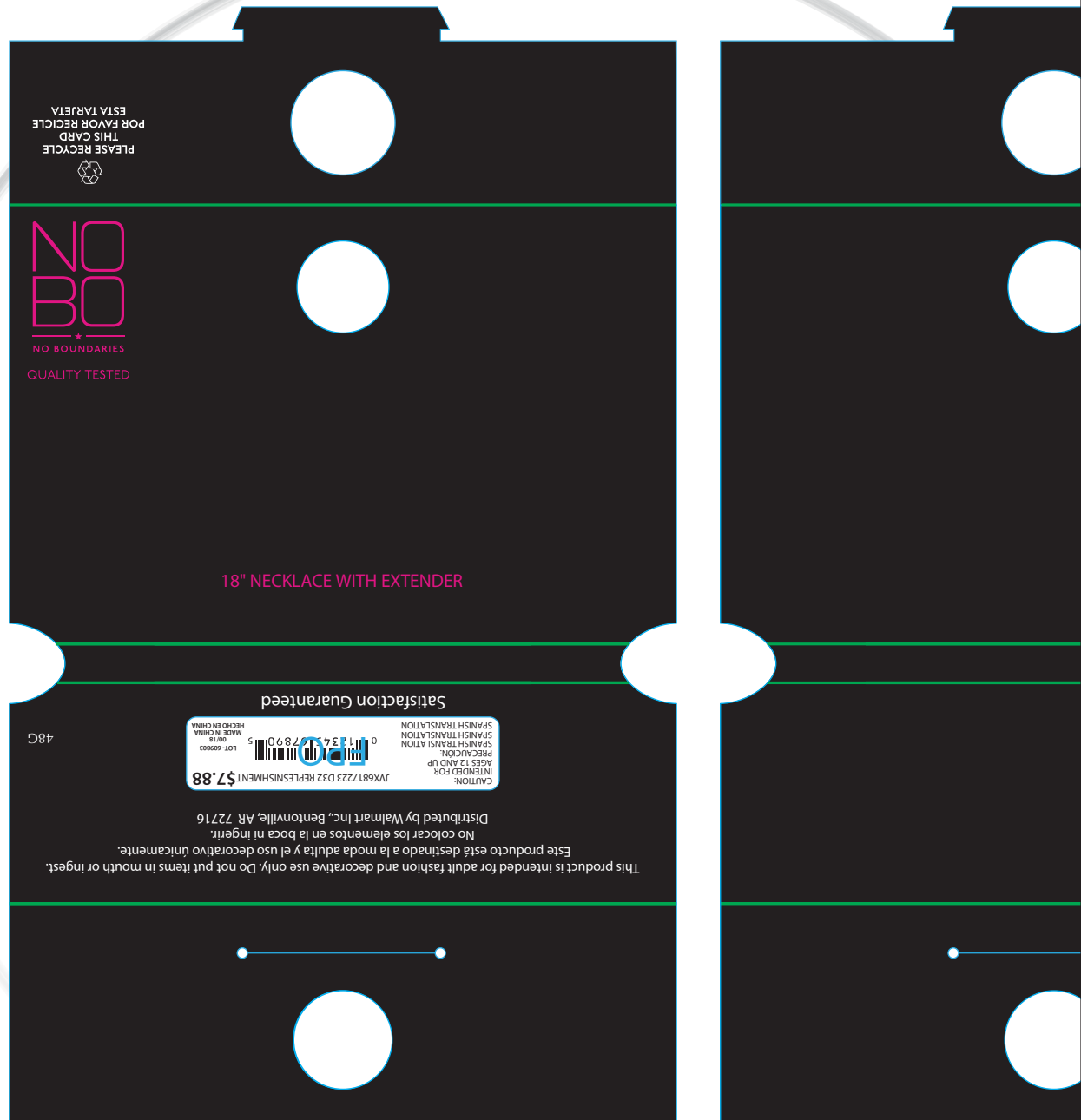


BLACK

##### COATING FRONT & BACK:



MATTE VARNISH





## FOLDOVERS

### SELF-LOCKING (NO ADHESIVE)

#### OPTION 3

**SUBSTRATE:**



350GSM WHITE UNCOATED BOARD  
(APPROX .016" WHITE BOARD)

**FOIL:**



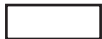
PINK FOIL (JINTAIHONG K-378)

**INK FRONT & BACK:**

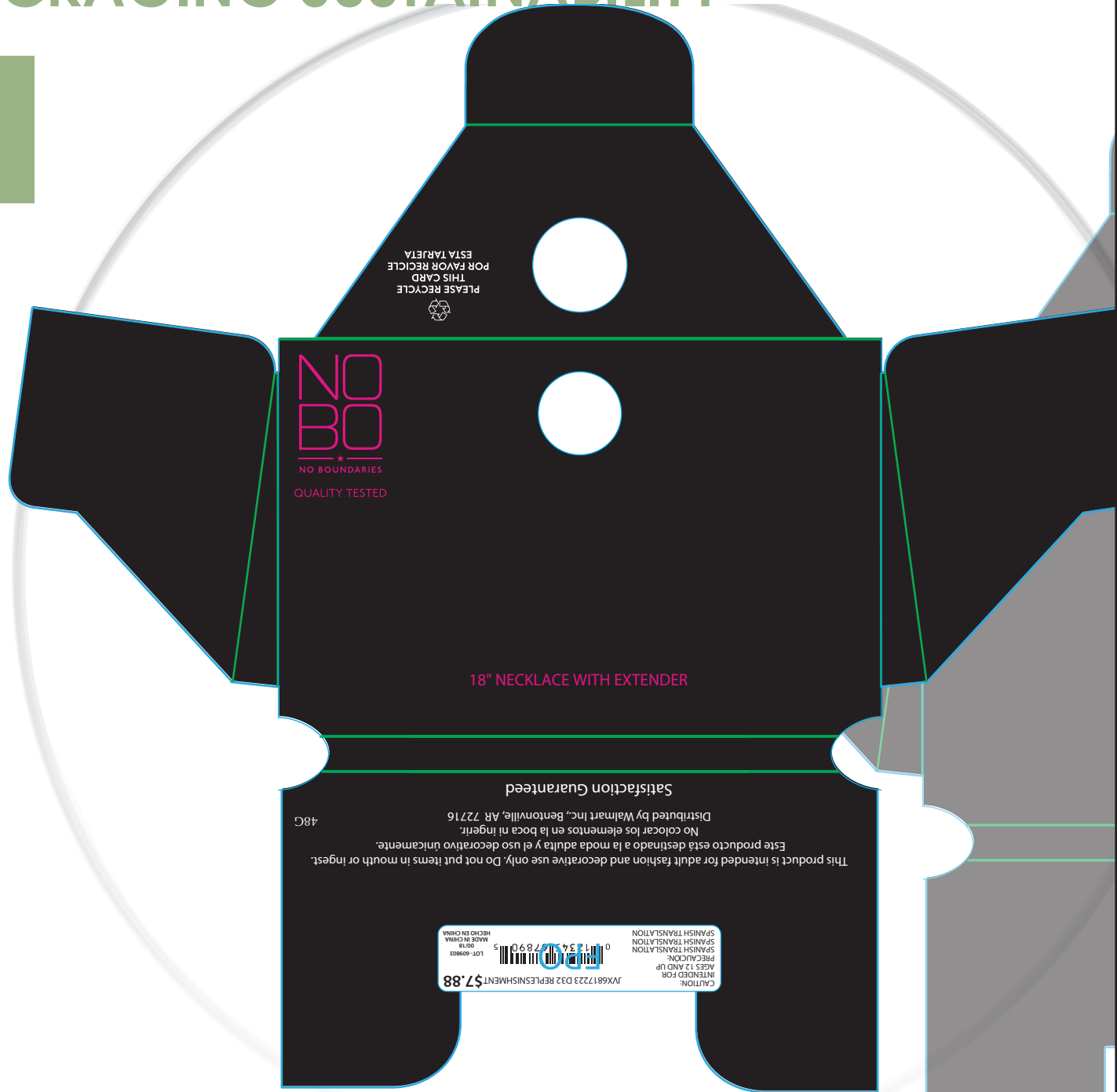


BLACK

**COATING FRONT & BACK:**



MATTE VARNISH



PLEASE RECYCLE  
THIS CARD  
POR FAVOR RECICLE  
ESTA TARJETA

**NO  
BO**  
NO BOUNDARIES  
QUALITY TESTED

18" NECKLACE WITH EXTENDER

This product is intended for adult fashion and decorative use only. Do not put items in mouth or ingest.  
Este producto está destinado a la moda adulta y el uso decorativo únicamente.  
No colocar los elementos en la boca ni ingerir.  
Distributed by Walmart Inc., Bentonville, AR 72716  
Satisfaction Guaranteed

CAUTION:  
INTENDED FOR  
AGES 12 AND UP  
PRELIMINARY  
SPANISH TRANSLATION  
SPANISH TRANSLATION  
SPANISH TRANSLATION  
JYX6817223 032 REPRESENTATION \$7.88  
0 1734 789015  
LOT: 609803  
DATE:  
MADE IN CHINA  
HECHO EN CHINA

CONTEMPO



# PACKAGING SUSTAINABILITY

## EARRINGS

**100% PAPER  
(NO POLYCAPPING)**

COMPARE TO S.E.P-287141C\_02

**SUBSTRATE:**



600GSM BLACK BOARD  
(APPROX .028" BLACK BOARD)

**FOIL:**



PINK FOIL (JINTAIHONG K-378)  
MATCH SAMPLE

**SILK SCREEN (BACK):**

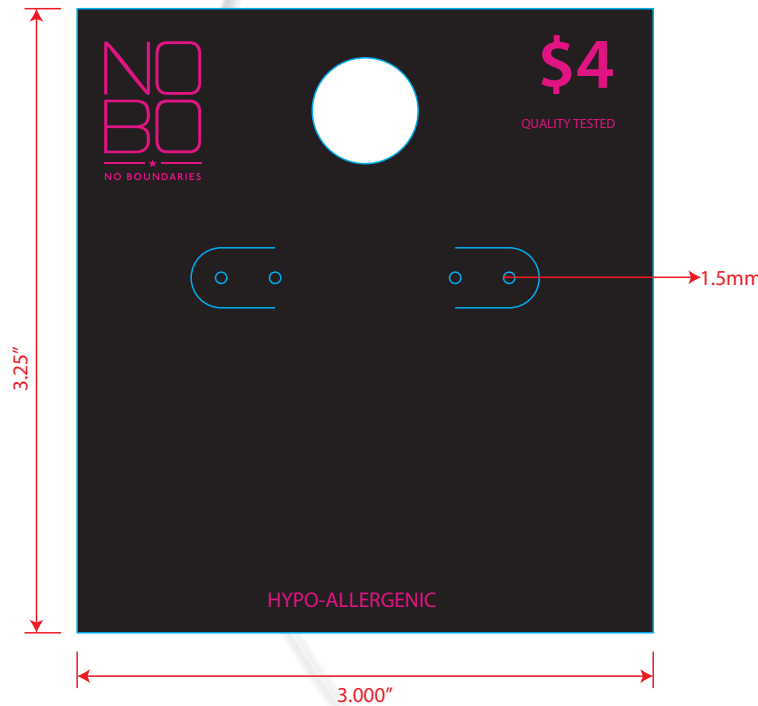


WHITE

**OTHER:**



0.75" x 2.875" COATED PAPER ON BACK



CONTEMPO



# PACKAGING SUSTAINABILITY

## HANGERS

### BOARD OPTIONS





## BLISTERS

### MATERIAL ALTERNATIVES

SUBSTRATE:



.015" CLEAR PET

**Option 1**

SUBSTRATE:



.015" CLEAR PETG

**Option 2**

SUBSTRATE:



.015" CLEAR PE + D2W

**Option 3**

SUBSTRATE:



.015" CLEAR PLA

**Option 4**

SUBSTRATE:



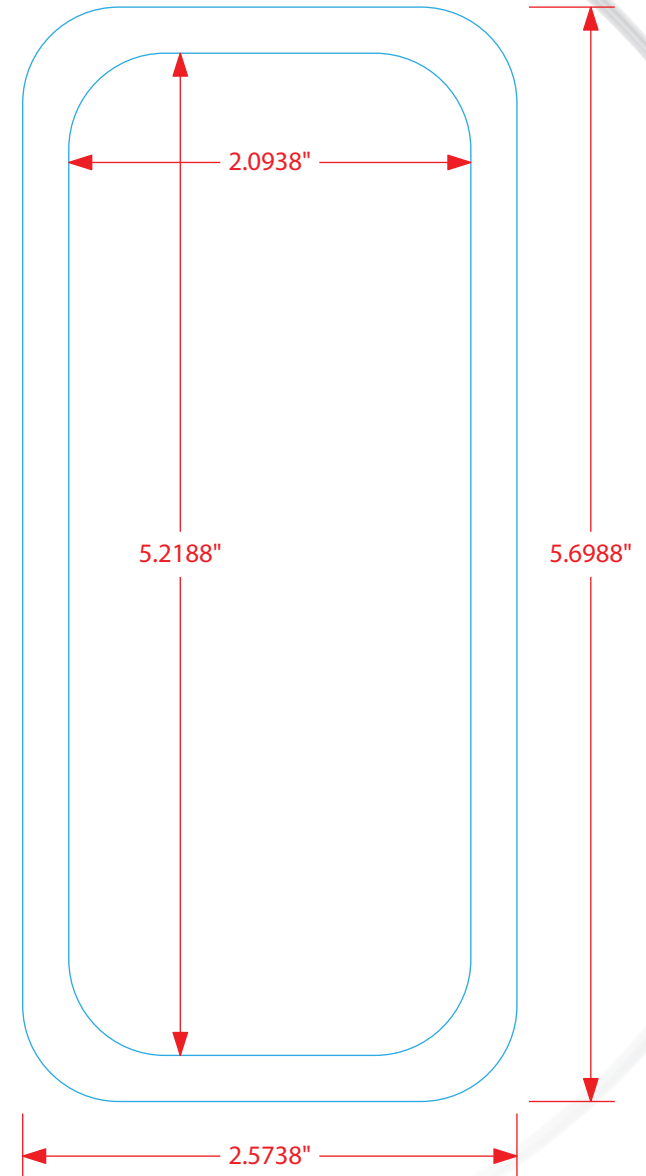
.010" CLEAR PET

**Option 5**



COMPARE TO O.X.N-660315C

**BLISTER FOR SFP-287300C**



CONTEMPO



# PACKAGING SUSTAINABILITY

## HIGH-END BOXES

### BOARD OR KEEPSAKES



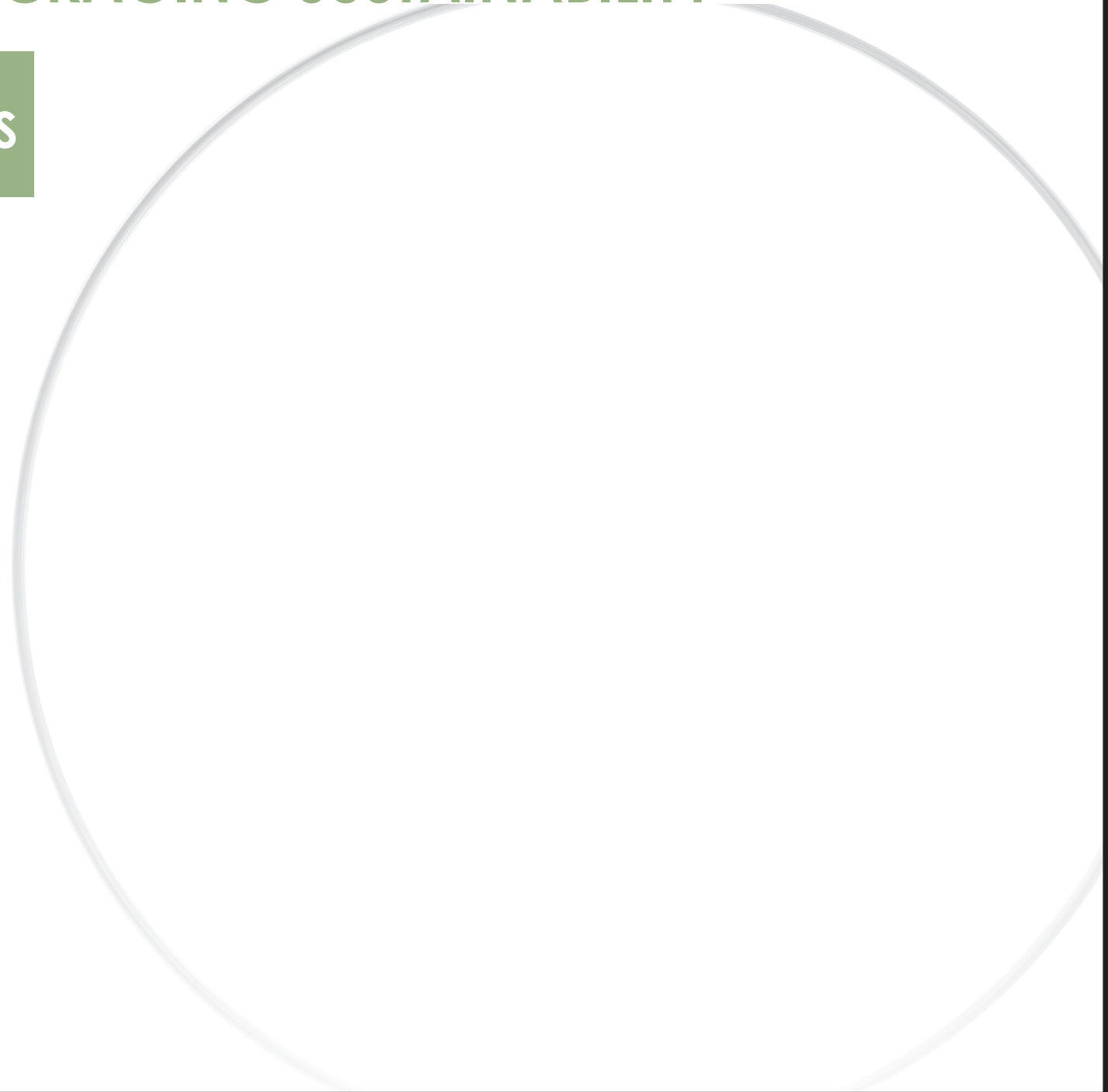
CONTEMPO



# PACKAGING SUSTAINABILITY

## TWO-PIECE BOXES

**FEWER PROCESSES  
IN MANUFACTURING**



CONTEMPO



# PACKAGING SUSTAINABILITY

## FLIP TOP BOXES

**RECYCLABLE  
(NO MAGNET)**

**COMPARE TO  
C.B.X-502296C**

